
i-3330

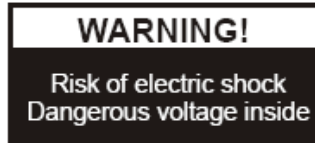
Document Camera



USER MANUAL

Please read this manual carefully before operating the document camera and keep it for reference

PRECAUTIONS



NOTICES: PLEASE READ CAREFULLY BEFORE USE

- ◆ Use the document camera under the rated electric conditions.
- ◆ Do not place the document camera on any unstable surface. It may fall and cause injuries or damages.
- ◆ Do not place this device directly under sunlight or near heaters.
- ◆ Do not place this device near water.
- ◆ Keep the camera away from acid or alkali gas.
- ◆ Do not place this document camera in humid, dusty, windy or vibrant locations.
- ◆ The recommended operating environment is:
 - Temperature: 0°C--45°C(32°F-113°F)
 - Humidity: less than 75%
- ◆ Always unplug BEFORE cleaning the device. Use a damp soft-cloth for cleaning. Do not use volatile solvent.
- ◆ When this equipment functions abnormally, such as smoke, smell, noise, immediately unplug and call for professional assistance.
- ◆ Unplug the document camera or shut off the power when not in use.

CONTENTS:

1. PARTS IDENTIFICATION	4
2. CONTROL PANEL	5
3. INPUTS AND OUTPUTS	6
4. REMOTE CONTROL	7
5. CONNECTIONS	9
5.1. COMPUTER CONNECTION	9
5.2. USB-A CONNECTION	10
5.3. VGA OUTPUT CONNECTION.....	10
5.4. C-VIDEO OUTPUT CONNECTION.....	11
5.5. S-VIDEO OUTPUT CONNECTION	11
6. USB FUNCTION	12
6.1 USB-A.....	12
6.2 USB-B.....	12
7. FEATURES	15
LIGHT.....	15
ZOOM IN AND ZOOM OUT	15
POSITIVE/NEGATIVE CONVERSION	15
FOCUS ADJUSTMENT.....	16
BRIGHTNESS ADJUSTMENT	16
WHITE BALANCE ADJUSTMENT	16
IMAGE FREEZE.....	16
IMAGE ROTATE.....	16
SPLIT SCREEN.....	16
TITLE FUNCTION	16
PICTURE IN PICTURE FUNCTION	17
IMAGE SAVE.....	17
IMAGE RECALL.....	17
RGB INPUT SWITCH	17
OUTPUT SWITCH.....	17
USB IMAGE CAPTURE AND VIDEO RECORDING.....	17
RS232 CONTROL.....	17
8. SPECIFICATIONS	18
9. TROUBLE-SHOOTING:	19

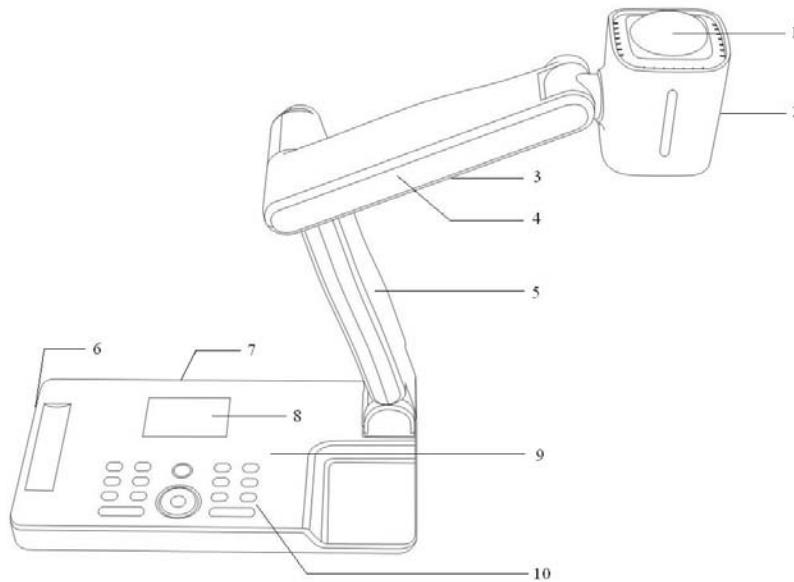
10. PACKING LIST	19
-------------------------------	-----------

11. TECHNICAL SUPPORT	20
------------------------------------	-----------

By Phone	20
----------------	----

Online.....	20
-------------	----

1. PARTS IDENTIFICATION



1. **Remote control IR receiver**
2. **Camera**
3. **LED light box**
4. **Upper mechanical arm**
5. **Main mechanical arm**
6. **Side panel**
7. **Back panel**
8. **LCD**
9. **Base unit**
10. **Control panel**

2. CONTROL PANEL



1. **POWER:** Turn on/off the power.
2. **MENU ENTER:** Enter the control Menu.
3. **COMPUTER:** Activate the VGA input.
4. **OUTPUT:** Select the output terminal (VGA or DVI), to provide the image from camera.
5. **SPLIT:** Split screen, enable the comparison between the frozen image and live image.
6. **TITLE:** Enable the title function.
7. **LAMP:** Turn on/off the LED light.
8. **AUTO/DEL:** Carry out auto focus, color adjustment and white balance.
When in image recall mode, press button to delete the selected image.
9. **BRIGHT+/-:** Image brightness control.
10. **SAVE:** Capture and save the current image.
11. **RECAL:** Image recall mode enabled, display the saved images.
Back to up level of menu in image recall mode.
Enter to view the content of USB device when USB device connected.
12. **Page +/-:** Page up and page down in image recall mode.
13. **FOCUS+/-:** Adjust focus manually, focus far and focus near.
14. **ZOOM+/-:** Image zoom in and zoom out control.

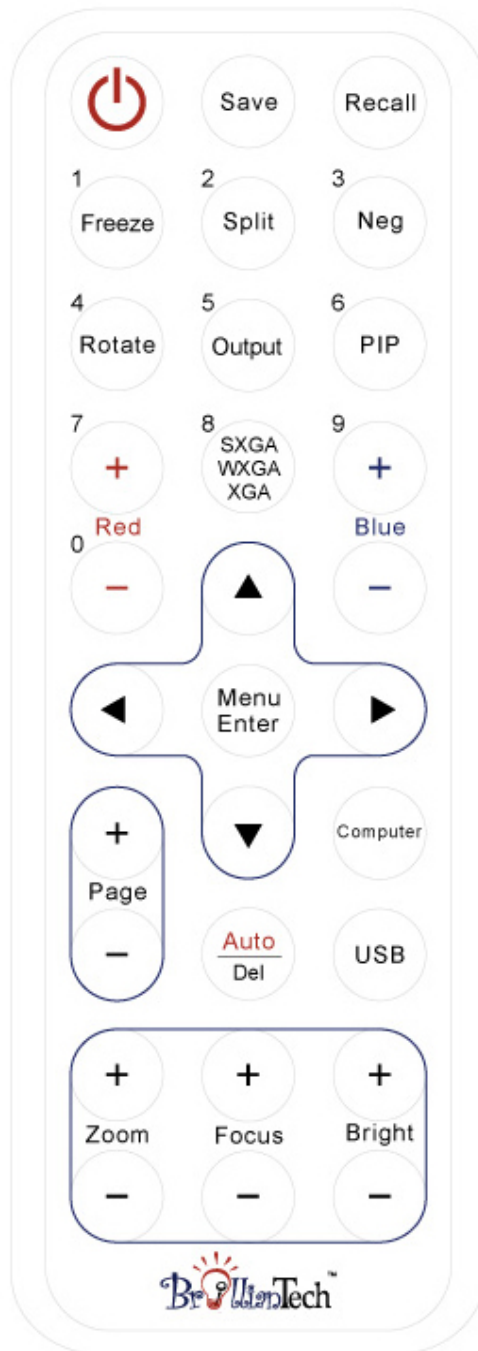
3. INPUTS AND OUTPUTS



1. **DC 12V**: Power input.
2. **RS 232**: Serial port, to control the document camera by computer via this port.
3. **DVI**: DVI signal output.
4. **AUDIO OUT**: Audio output.
5. **VGA OUT**: VGA(RGB) signal output(15 pin D-SUB).
6. **CVBS**: Composite video output.
7. **S-VIDEO**: S-Video output.
8. **VGA IN**: VGA(RGB) signal input(15 pin D-SUB).
9. **AUDIO IN**: Audio input.
10. **USB-A**: Communicate with USB device, USB mouse, memory stick.
11. **USB-B**: Capture image into a connected computer via provided software.

Download the saved image to computer

4. REMOTE CONTROL



1. **Save:** Capture the image in display.
2. **Recall:** a. Image recall mode enabled, display the saved images.
b. When a memory stick was connected, press Recall to show the content in the

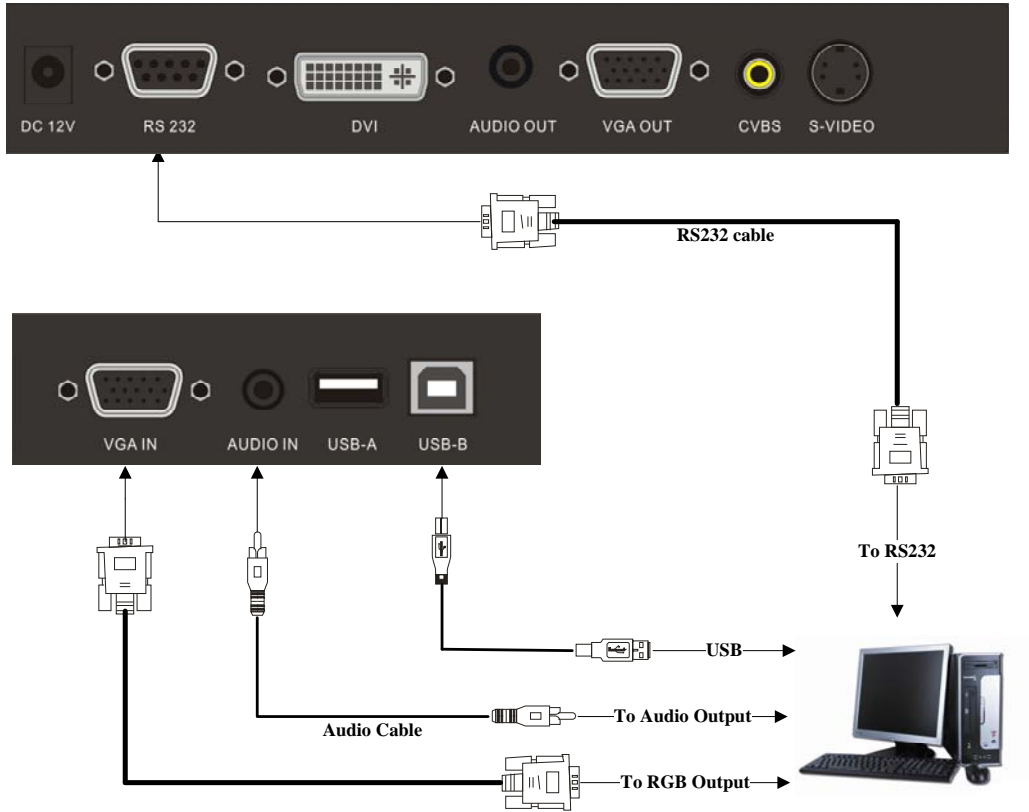
memory stick

c. Back to upper level image recall mode.

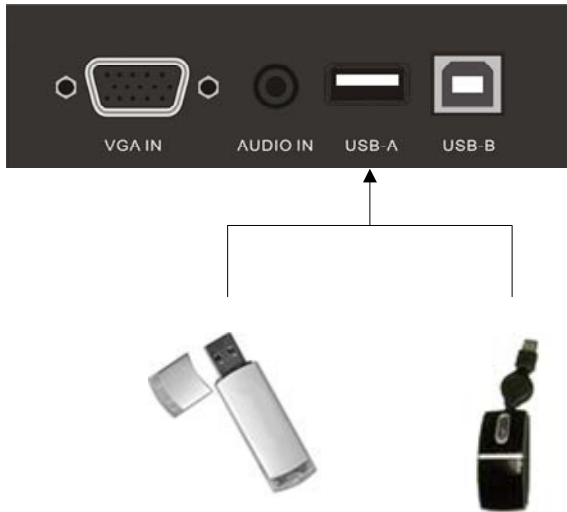
3. **Freeze:** Freeze/unfreeze the image.
4. **Split:** Split screen, enable the comparison between the frozen image and live image.
5. **Neg:** Switch the image between the positive and negative mode.
6. **Rotate:** Rotate the image by 90°, 180°, and 270°.
7. **Output:** Select the output terminal (VGA or DVI), to provide the image from camera.
8. **PIP:** Active the Picture in Picture function.
 - 1>. Press Recall, then use the arrow button to select a saved image, press PIP to choose it for the PIP image.
 - 2>. Press Recall to exit the image recall mode, and press PIP again, then there will be a small window on the lower right screen, showing the selected saved image.
9. **Red+/-:** Image chroma control (red).
10. **Blue+/-:** Image chroma control (blue).
11. **SXGA/WXGA/XGA:** Switch the output signal between SXGA, WXGA and XGA.
12. **Menu Enter:** a. Activate the on-screen menu.
 - b. Display the selected image in the image recall mode.
13. **Page +/-:** Page up and page down in the image recall mode.
14. **Auto/Del:** a. Carry out auto focus, color adjustment and white balance.
 - b. Delete the selected image in the image recall mode.
15. **Computer:** Activate the VGA input to display a connected computer image.
16. **USB:** Switch the USB function between USB camera(capture the image that from camera to PC and USB storage(download image from visualizer to PC)).
17. **Zoom+/-:** Image zoom in and zoom out control.
18. **Focus+/-:** Adjust focus manually, focus far and focus near.
19. **Bright+/-:** Image brightness control.

5. CONNECTIONS

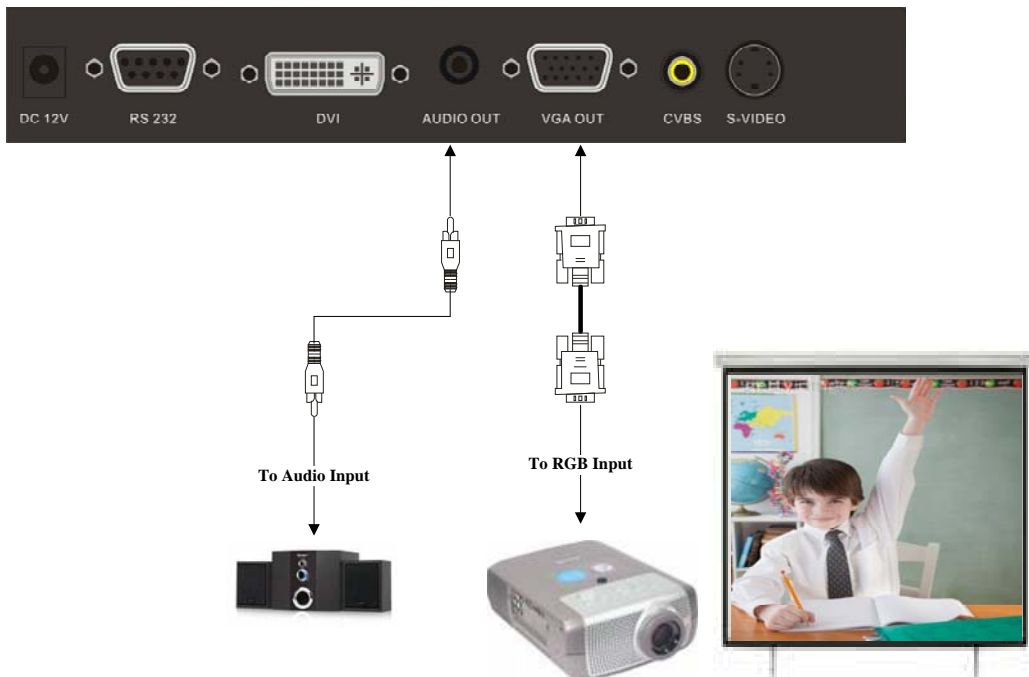
5.1. COMPUTER CONNECTION



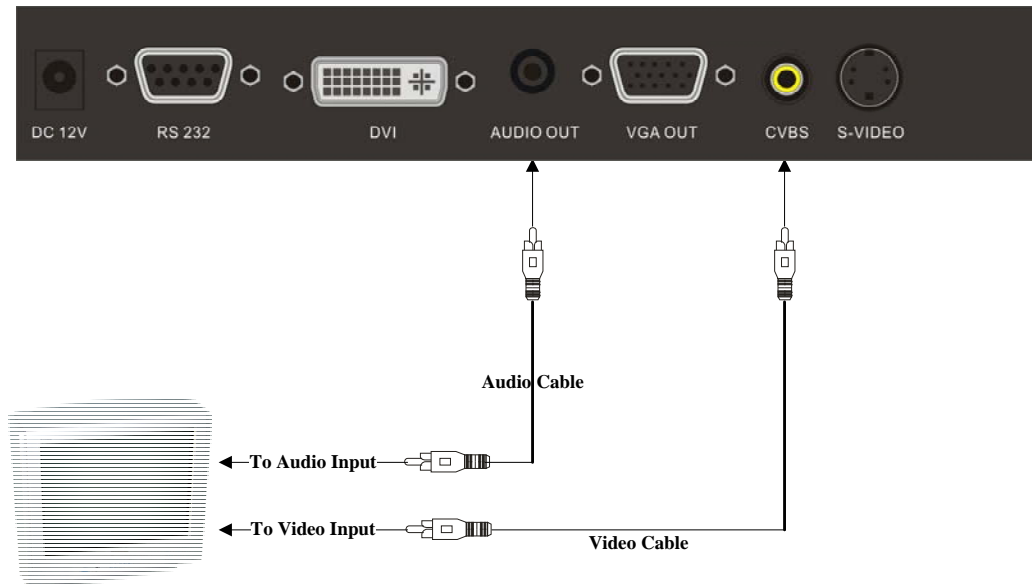
5.2. USB-A CONNECTION



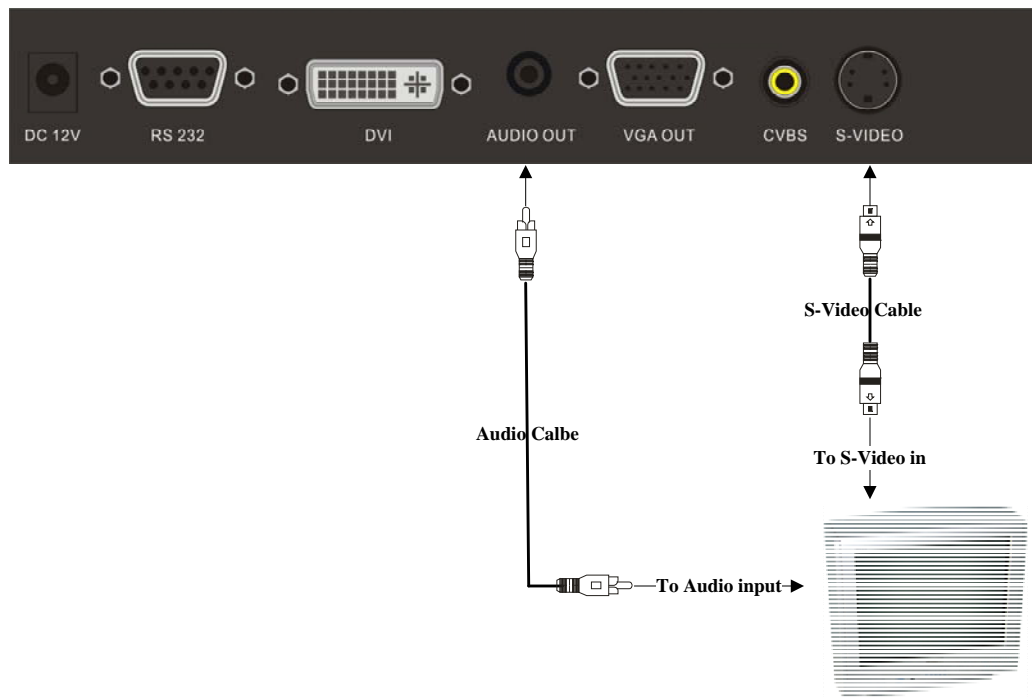
5.3. VGA OUTPUT CONNECTION



5.4. C-VIDEO OUTPUT CONNECTION



5.5. S-VIDEO OUTPUT CONNECTION



6. USB FUNCTION

6.1 USB-A

USB-A connector can be used to communicate with USB mouse and USB memory stick or other USB slave device.

1. USB mouse

The USB mouse will be automatically activated when plug into the USB-A connector of i3330, you can use it to make note or mark on the image.

2. Memory stick

- * Connect the memory stick with i3330, then press the Recall button to access the memory stick.
- * Use the left and right arrow to exit/enter a folder.
- * Use the up and down arrow button to select an image.
- * Press Menu Enter to display the selected image.
- * Press the Recall button to exit.

6.2 USB-B

There are two different functions: USB disk and USB video.

1. USB disk

* Press the USB button on the remote control and use the arrow buttons to change the USB function to USB disk.

Note: Make sure that the USB-B connector is disconnected during this step.

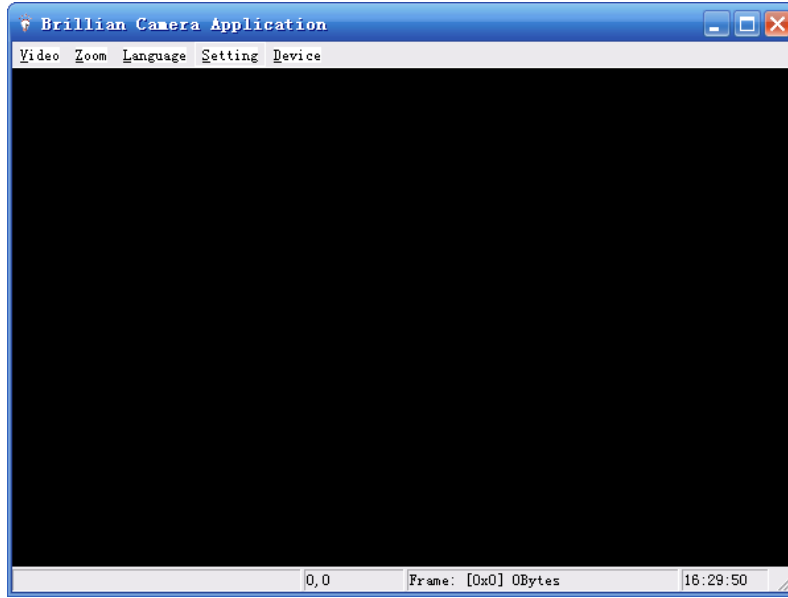
- * Connect the i-3330 to your computer with the provided USB cable.
- * Open *My computer*, we will see a disk called *sdboot*, which is the built-in memory of the i-3330, you can download or upload images to the connected computer.

2. USB video

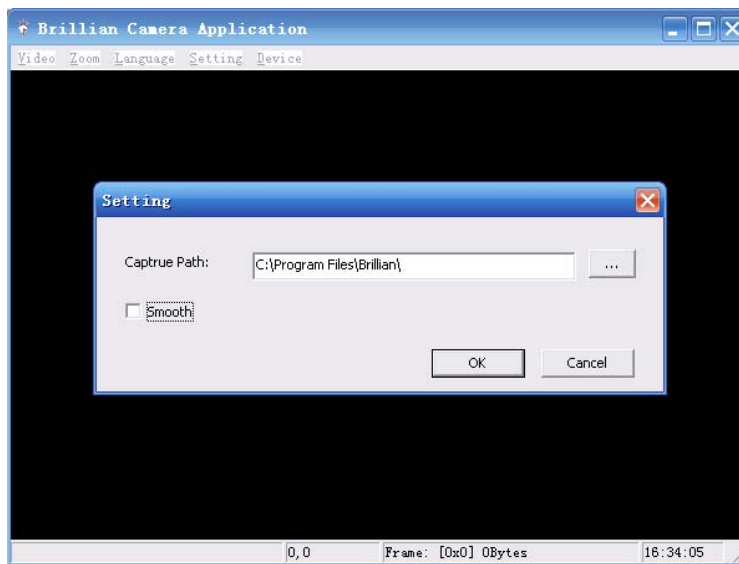
* Change the USB function to *USB Video*.

Note: Make sure the USB-B connector is disconnected during this step.

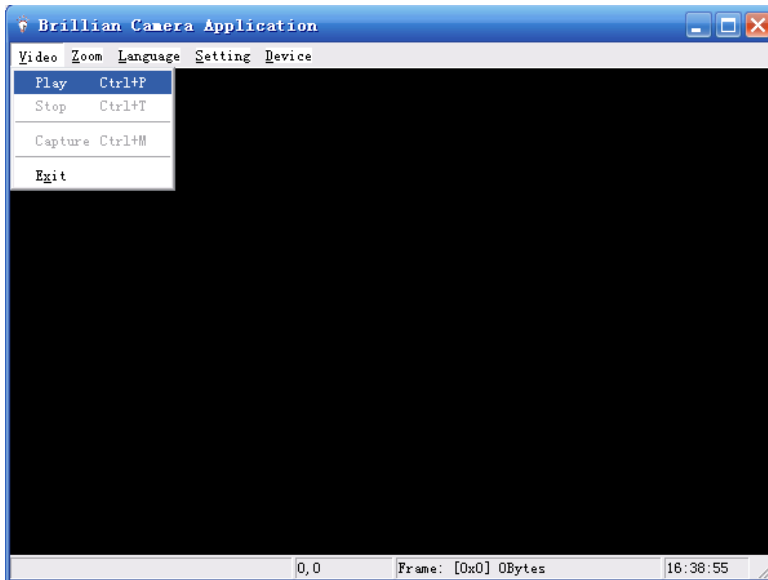
- * Connect the i3330 to computer with the provided USB cable.
- * Install the USB software that in the provided CD to your computer.
- * Run the USB software, then we will see the following window:



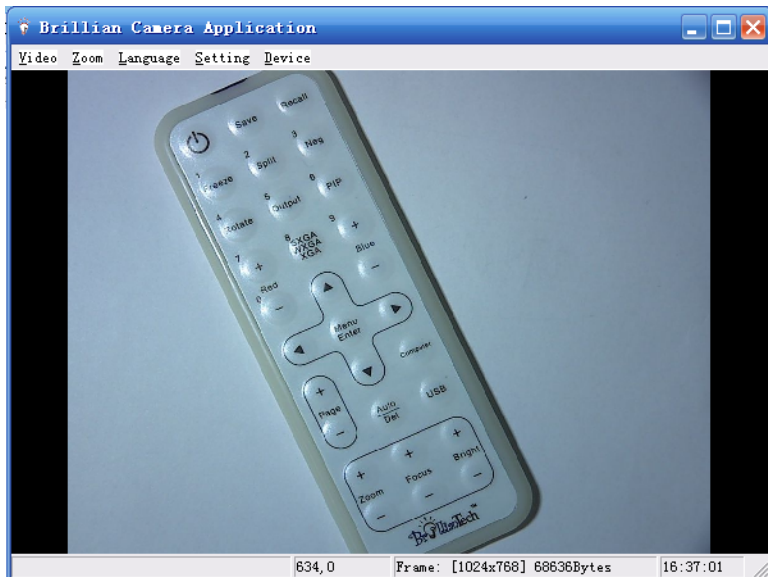
*Click Setting to set the save location.



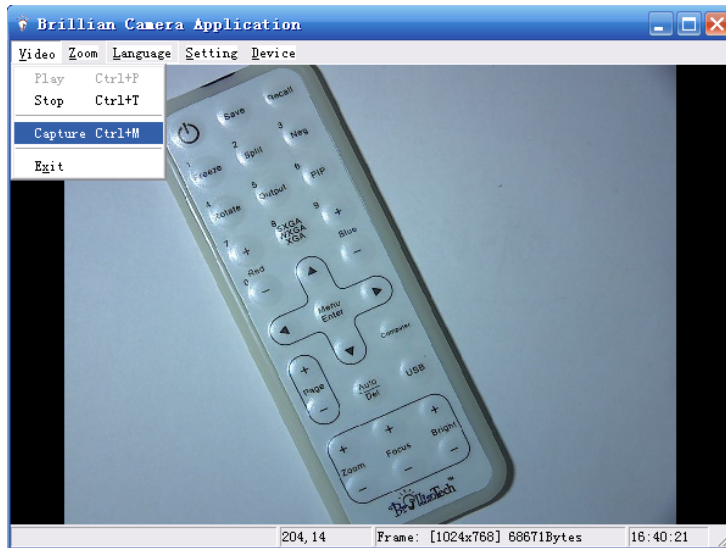
*Click OK to finish the setup, then click *Video->Play* to preview the image



*We will see the following window:



*Click *Video->Capture* to capture the image to computer.



* Click *Video*->*Stop* to stop the USB function.

7. FEATURES

LIGHT

Press "**LAMP**" to turn on or turn off the light.

ZOOM IN AND ZOOM OUT

Press "**ZOOM+**" or "**ZOOM-**"

POSITIVE/NEGATIVE CONVERSION

The i-3330 is automatically set to display normal materials on the screen when the power is on. To display negatives, simply laying any film negative on the table and press the Neg button on remote control, the negative image is converted to a positive picture instantly.

FOCUS ADJUSTMENT

When the i-3330 is turned on the focus automatically adjusts to the stage, it is not necessary to re-adjust the focus if you are only working with flat materials (text, photos, etc.). Only 3D objects require a focus adjustment. Press the “**AUTO**” button to auto focus. Press the "**FOCUS+**", or "**FOCUS-**" button to focus manually.

BRIGHTNESS ADJUSTMENT

If the image effect is not satisfactory, you can adjust the brightness to get a better image effect. Use the “**BRIGHT+**” or “**BRIGHT-**” button to adjust the brightness.

WHITE BALANCE ADJUSTMENT

Each time the lighting condition changes, the user should adjust the white balance of the CMOS. Press the “**AUTO**” button to adjust the white balance automatically.

IMAGE FREEZE

The freeze function allows you to discretely prepare the next image without interrupting current presentation. Press "**Freeze**" on the remote control to freeze and unfreeze the image.

IMAGE ROTATE

Press “**Rotate**” on the remote control to rotate the image by 90°, 180°, 270°.

SPLIT SCREEN

Press “**SPLIT**” to compare two images or compare two different views of one object side by side.

TITLE FUNCTION

Press “**TITLE**” to enable the title function. It freezes top 1/8 of the screen while the bottom 7/8

live.

PICTURE IN PICTURE FUNCTION

Press “PIP” on the remote control to active the picture in picture function.

IMAGE SAVE

The i-3330 offers the opportunity of storing 400 images on board. You can recall them by just pressing one of the numerical buttons on the front panel or the remote control. Press "SAVE" to capture the current displaying image.

IMAGE RECALL

By pressing “RECALL”, all saved images are displayed in the thumbnail index mode for easy selection.

RGB INPUT SWITCH

Press the “COMPUTER” to select the VGA input signal instead of the signal from camera.

OUTPUT SWITCH

Press “OUTPUT” to toggle between DVI output and VGA output signals.

USB IMAGE CAPTURE AND VIDEO RECORDING

The USB port can be used to capture still images and capture live videos from the i-3330 into a computer.

RS232 CONTROL

The RS232 terminal allows you to integrate the i-3330 into any sophisticated central control system. RS232 also enable you to control the i-3330 via computer.

8. SPECIFICATIONS

Model	i-3330
Sensor	1/3" CMOS
Pixels	3 Megapixel
Zoom	9x optical, 12x digital
Frame rate	24
Shooting area	Max: 13.5" x 10.6" /34.3 cm x 26.9 cm Min: 0.1" x 0.1"/0.3 cm x 0.3 cm
Focus	Auto/manual
Output resolution	XGA, SXGA, WXGA
Resolution(Horizontal)	≥750 TV lines
White balance	Auto/manual
Color adjustment	Yes
Brightness adjustment	Yes
Negative/Positive conversion	Yes
Image capture	Yes,400 NON-volatile images
Video recording	Yes(via USB)
Image rotation	Yes
Image split	Yes
Image freeze	Yes
Picture in picture	Yes
Title	Yes
OSD	Yes
Menu	Yes
Inputs	VGA ×1, AUDIO ×1
Outputs	VGA ×1, C-VIDEO ×1, S-VIDEO ×1, AUDIO ×1
USB2.0	Slave×1(USB camera), Host×1
RS232	x1(computer controllable)
Remote control	Yes(360°controllable)
Light source	LED light box
Kensington lock	Yes
Operating temperature	32°F ~113°F
Dimensions	Folded:12.6"×6.6"×3.7", Setup:19.7"×6.6"×19.3"

Power supply	12V DC power adapter
Weight(net)	5.5lbs/2.5kg

9. TROUBLE-SHOOTING:

Symptoms	Possible causes/counter-measures
No image	<ol style="list-style-type: none"> 1. Power cord is not properly connected. 2. Cables are not properly connected. 3. Power switch is not turned on. 4. The built-in fuse is broken: Change fuse. 5. Change the output resolution.
Image bending	<ol style="list-style-type: none"> 1. Camera not in right position, adjust the camera. 2. Distortion of LCD display, press the “Auto adjust” of the LCD.
Out of focus or blurring image	<ol style="list-style-type: none"> 1. The object is too close to the lens. 2. Focus is on the top point of zoom, press ZOOM-. 3. Auto-focus is not on: press AUTO again. 4. Fog on the lens in damp climate. It will disappear gradually when the equipment warms up.

If the problem still remains after checking the above, consult your dealer or authorized service personally.

10. PACKING LIST

Item	Quantity
Power cord	1
Power adaptor(12V/2A)	1
VGA cable	1
S-Video cable	1
Video cable	1
Audio cable	1

USB cable(2.0)	1
Remote control	1
User manual(CD)	1

11. TECHNICAL SUPPORT

Brilliant Technology is committed to providing highest possible stand of customer service. We can be reached:

By Phone

Call us at 1-877-98-Brilliant/1-877-982-7455. Our technical support staff provides technical assistance from 9:00AM through 5:00PM Eastern Standard Time, Monday through Friday. Please gather the following information before calling:

- Product model name(s) and numbers
- Product serial number(s)
- Detailed questions or problem descriptions.

Online

Technical support is also available online at Brilliant's web site at www.brillianttechnology.com.

You can enter your questions and concerns through our online form. Or you can email us at support@brillianttechnology.com.

Copyrights ©2009, Brilliant Technology, LLC. All Rights Reserved.

Brilliant Technology, LLC

Toll Free: 1-877-98-Brilliant / 1-877-982-7455

E-mail: info@brillianttechnology.com

Web: www.brillianttechnology.com