
i-3060

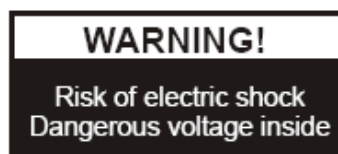
Document Camera



USER MANUAL

Please read this manual carefully before operating the document camera and keep it for reference

PRECAUTIONS



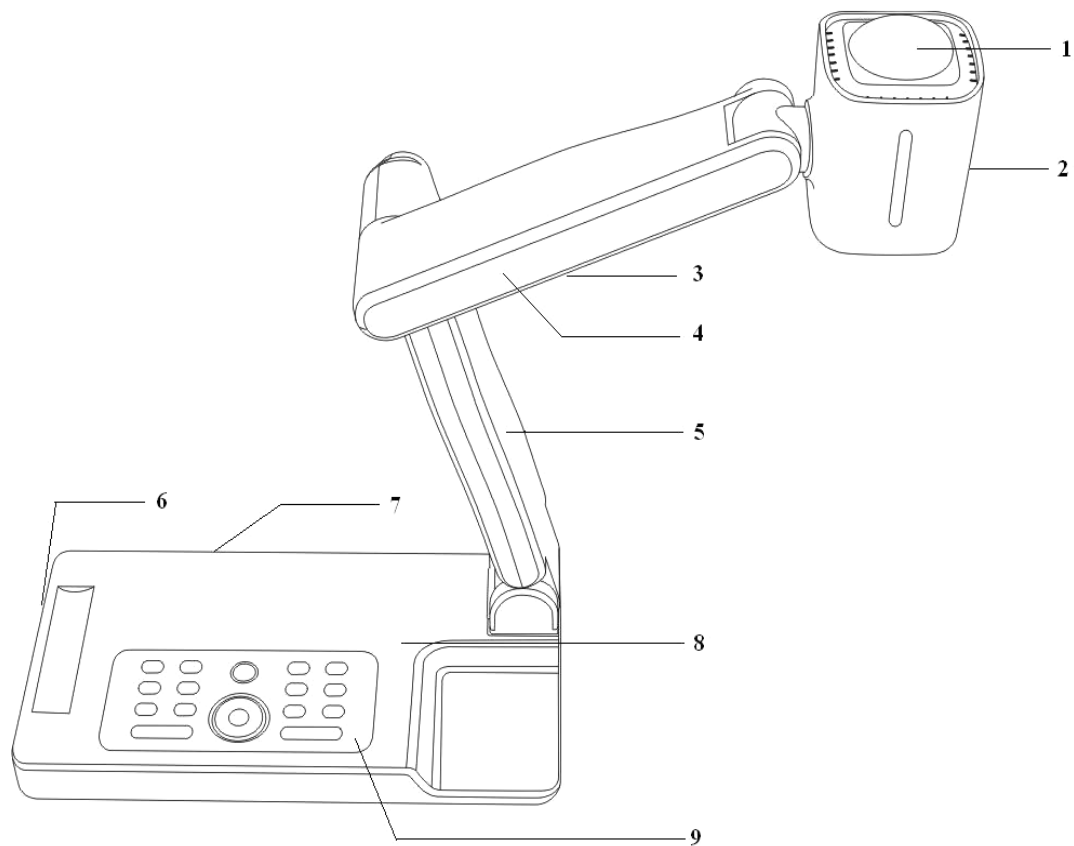
NOTICES: PLEASE READ CAREFULLY BEFORE USE

- ⌚ Use the document camera under the rated electric conditions.
- ⌚ Do not place the document camera on any unstable surface. It may fall and cause injuries or damages.
- ⌚ Do not place this device directly under sunlight or near heaters.
- ⌚ Do not place this device near water.
- ⌚ Keep the camera away from acid or alkali gas.
- ⌚ Do not place this document camera in humid, dusty, windy or vibrant locations.
- ⌚ The recommended operating environment is:
 - Temperature: 0°C--45°C(32°F-113°F)
 - Humidity: less than 75%
- ⌚ Always unplug BEFORE cleaning the device. Use a damp soft-cloth for cleaning. Do not use volatile solvent.
- ⌚ When this equipment functions abnormally, such as smoke, smell, noise, immediately unplug and call for professional assistance.
- ⌚ Unplug the document camera or shut off the power when not in use.

CONTENTS:

1. PARTS IDENTIFICATION	4
2. CONTROL PANEL	5
3. INPUTS AND OUTPUTS.....	6
4. REMOTE CONTROL.....	7
5. CONNECTIONS.....	8
5.1. USB CONNECTION.....	8
5.3. VGA OUTPUT CONNECTION.....	9
7. FEATURES	14
LIGHT	14
ZOOM IN AND ZOOM OUT	14
FOCUS ADJUSTMENT.....	14
BRIGHTNESS ADJUSTMENT	14
WHITE BALANCE ADJUSTMENT.....	14
IMAGE FREEZE.....	14
IMAGE ROTATE	15
SPLIT SCREEN	15
IMAGE SAVE	15
IMAGE RECALL.....	15
USB IMAGE CAPTURE AND VIDEO RECORDING.....	15
8. SPECIFICATION	16
9. TROUBLE-SHOOTING:	17
10. PACKING LIST	17
11. TECHNICAL SUPPORT.....	18
By Phone.....	18
Online	18

1. PARTS IDENTIFICATION



1. **Remote control IR receiver**
2. **Camera**
3. **LED light box**
4. **Upper mechanical arm**
5. **Main mechanical arm**
6. **Side panel**
7. **Back panel**
8. **Base unit**
9. **Control panel**

2. CONTROL PANEL

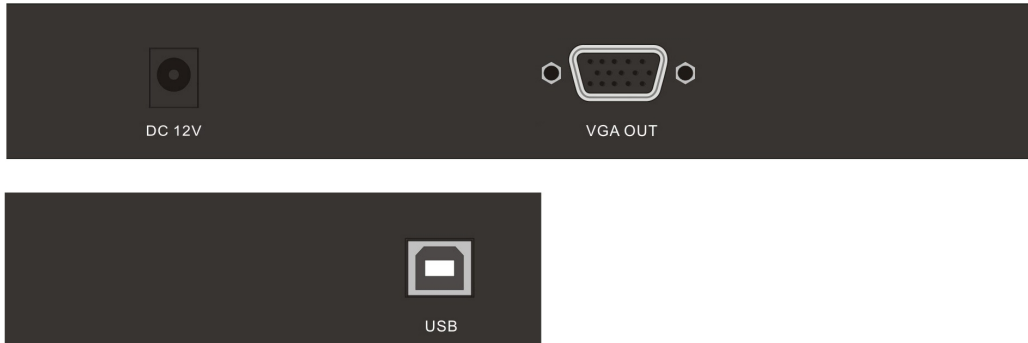


1. **POWER:** Turn on/off the power.
2. **AUTO:** Carry out auto focus, color adjustment and white balance.
3. **SPLIT:** Split screen, enable the comparison between the frozen image and live image.
4. **FREEZE:** Freeze/unfreeze the image.
5. **LAMP:** Switch the input source.
6. **ROTATE:** Rotate the image by 90°, 180°, 270°.
7. **MIRROR:** Output right-and-left mirror image.
8. **FLIP:** Output up-and-down mirror image.
9. **BRIGHT+/-:** Image brightness control.
10. **SAVE:** Capture and save the current image.
11. **RECALL:** Image recall mode enabled, display the saved images.
Back to up level of menu in image recall mode.
12. **PAGE +/-:** Page up and page down in image recall mode.
13. **FOCUS+/-:** Adjust focus manually, focus far and focus near.
14. **ZOOM+/-:** Image zoom in and zoom out control.

In image recall mode:

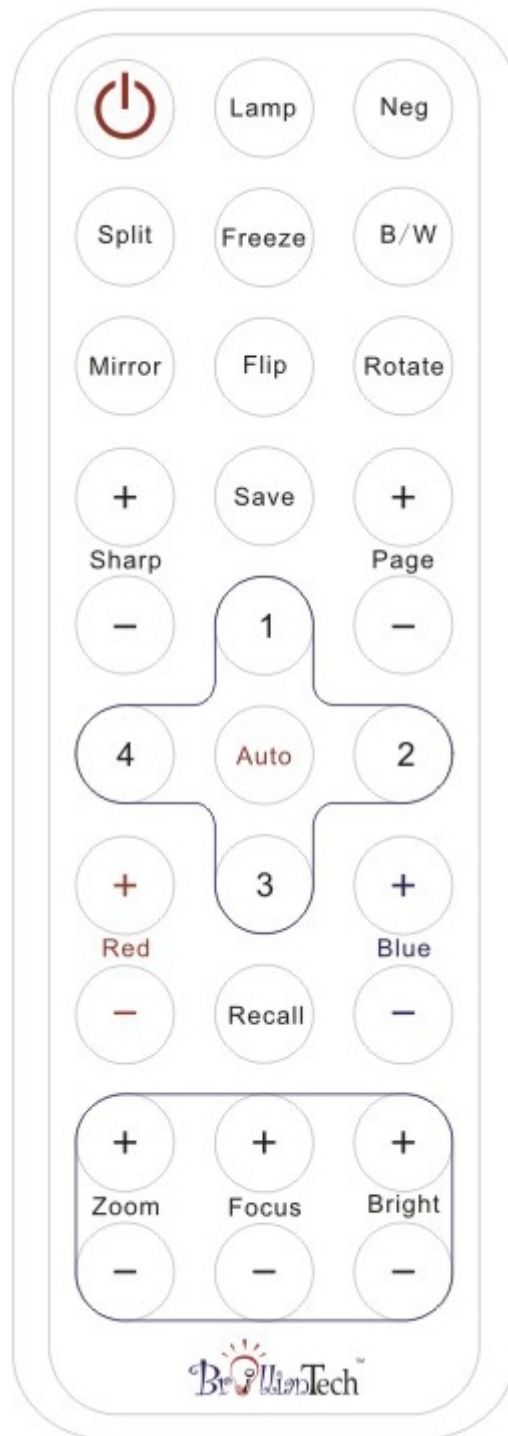
- 1: Display the first image.
- 2: Display the second image.
- 3: Display the third image.
- 4: Display the fourth image.

3. INPUTS AND OUTPUTS



1. **DC 12V:** Power input.
2. **VGA OUT:** VGA(RGB) signal output(15 pin D-SUB).
3. **USB:** Capture image into a connected computer via provided software.

4. REMOTE CONTROL



1. **Lamp:** Turn on/off the LED light.
2. **Neg:** Switch the image mode between positive and negative.
3. **Split:** Split screen, enable the comparison between the frozen image and live image.
4. **Freeze:** Freeze/unfreeze the image.

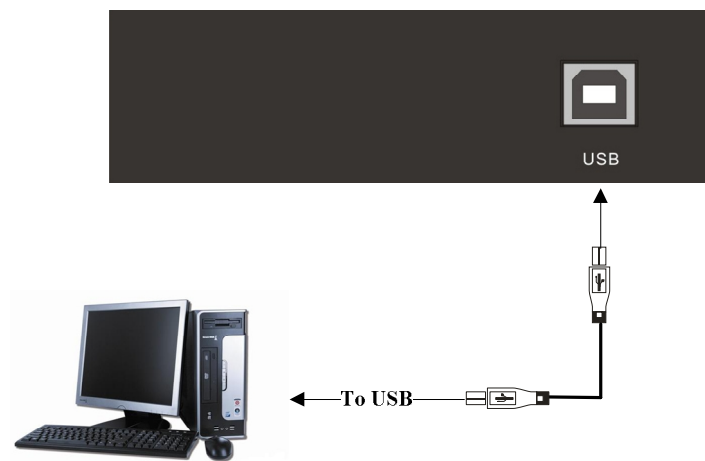
-
5. **B/W**: Switch the output image between color and monochrome.
 6. **Mirror**: Output right-and-left mirror image.
 7. **FLIP**: Output up-and-down mirror image.
 8. **ROTATE**: Rotate the image by180°.
 9. **Sharp+/-**: Image sharpness control.
 10. **Page +/-**: Page up and page down in image recall mode.
 11. **Save**: Capture the image in display.
 12. **Auto**: Carry out auto focus, color adjustment and white balance.
 13. **Red+/-**: Image chroma control (red).
 14. **Blue+/-**: Image chroma control (blue).
 15. **Recall**: Image recall mode enabled, display the saved images.
 17. **Zoom+/-**: Image zoom in and zoom out control.
 18. **Focus+/-**: Adjust focus manually, focus far and focus near.
 19. **Bright+/-**: Image brightness control.

In image recall mode:

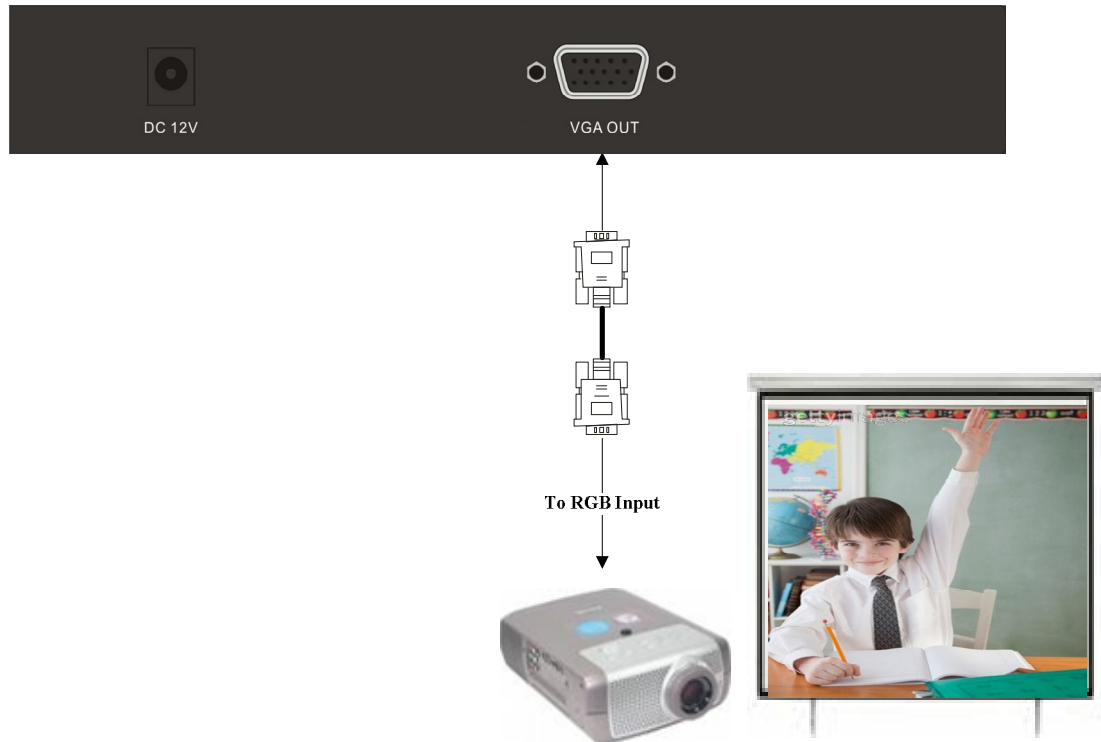
- 1: Display the first image.
- 2: Display the second image.
- 3: Display the third image.
- 4: Display the fourth image.

5. CONNECTIONS

5.1. USB CONNECTION



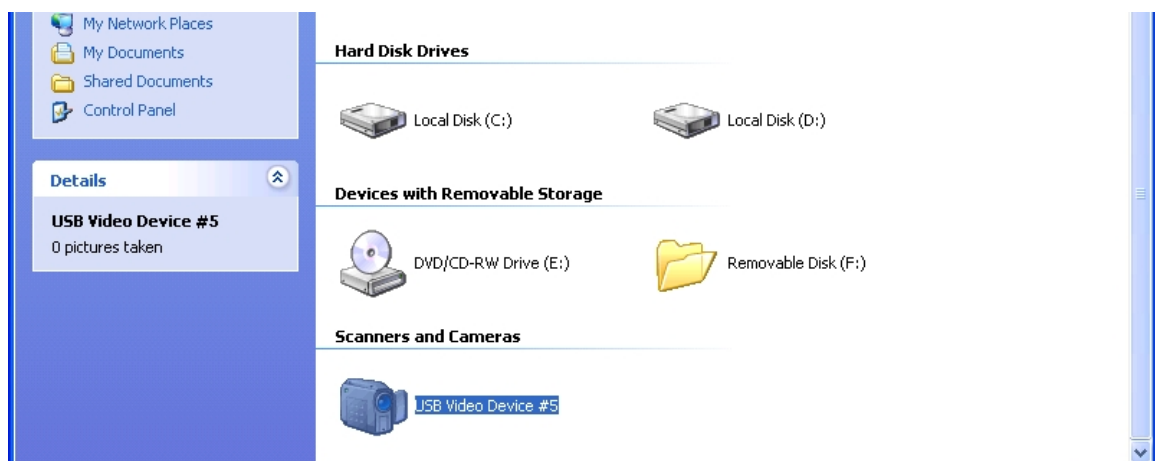
5.3. VGA OUTPUT CONNECTION



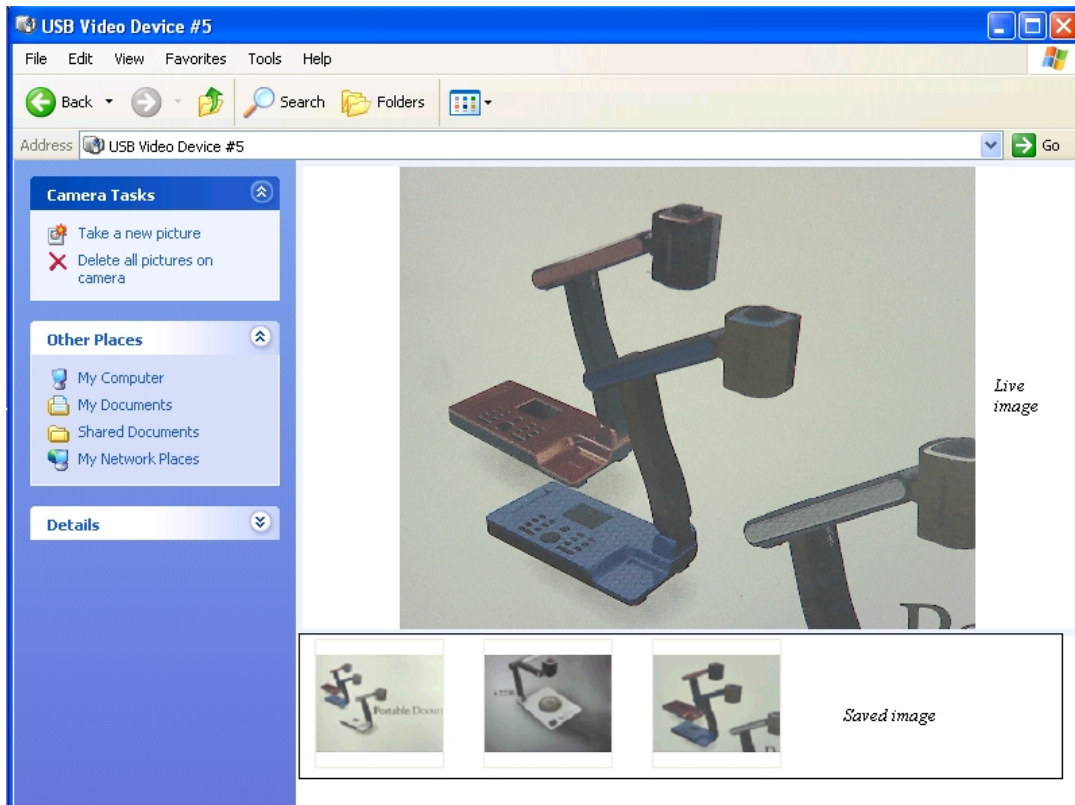
6. USB CAMERA

You can capture images and videos on the i3060 from a computer via USB.

1. Connect the computer and the i3060 with a USB cable, turn on the power of i3060.
2. Open *My Computer*, you will see a USB Video Device:

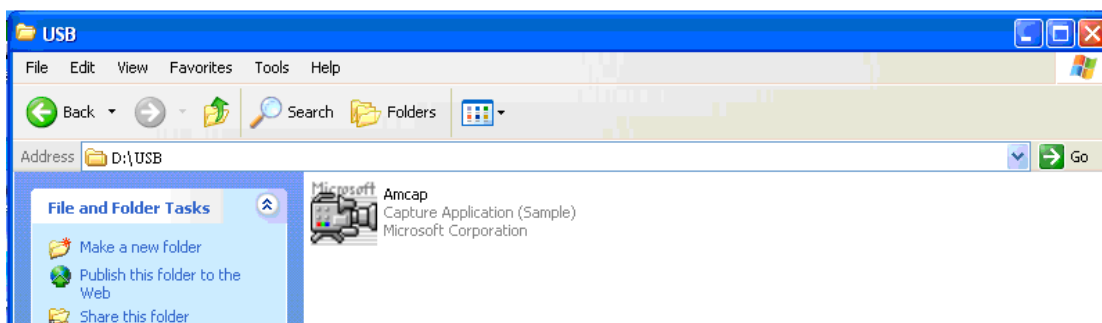


3. Double click USB Video Device, you will see the following image capture window:



To capture the video, please see the following steps:

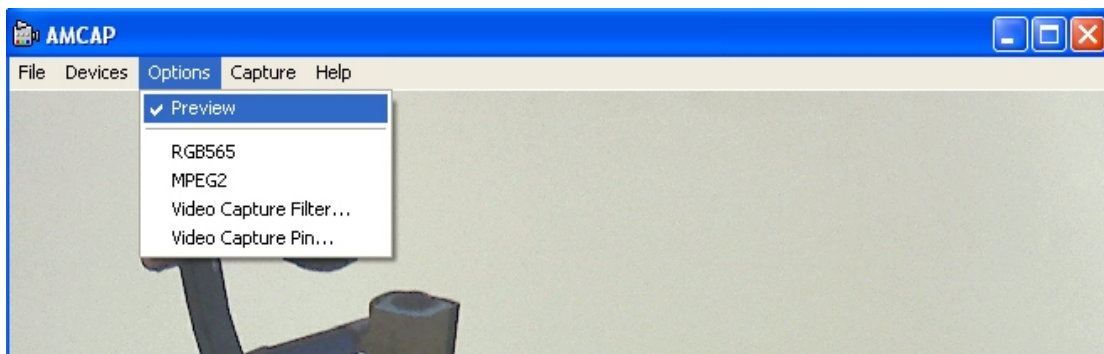
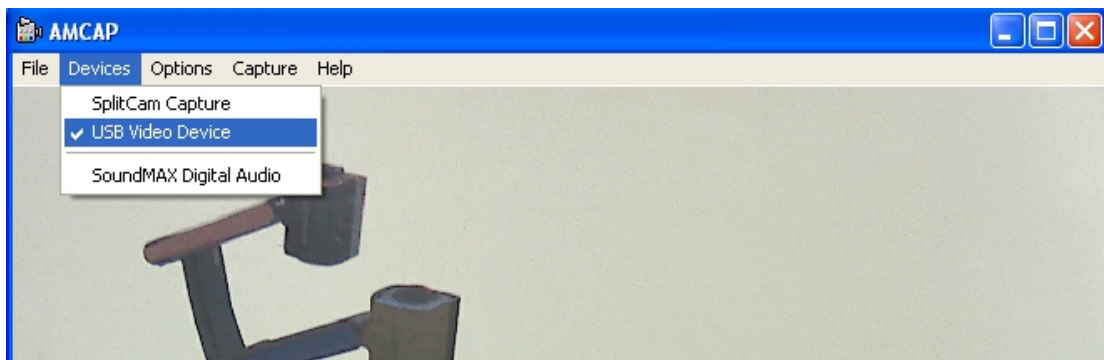
1. Copy the USB software that in the provided CD into your computer.
2. Open the USB folder, double click to run the USB capture application:



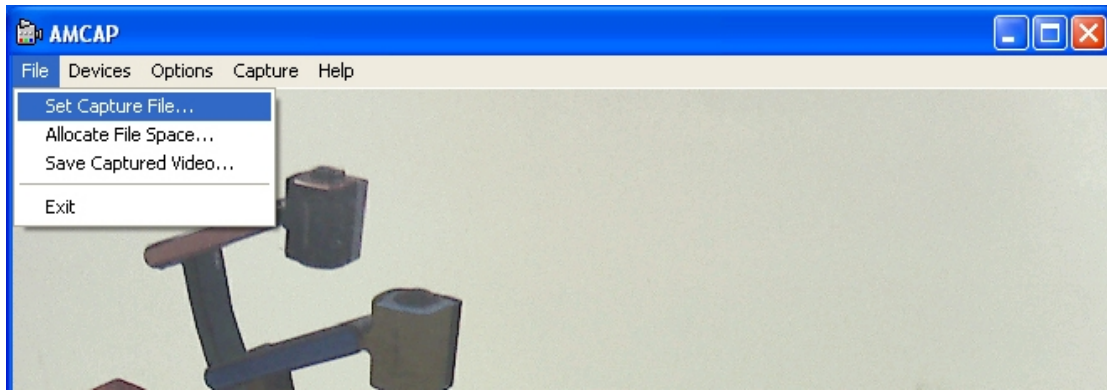
You will see the following window:



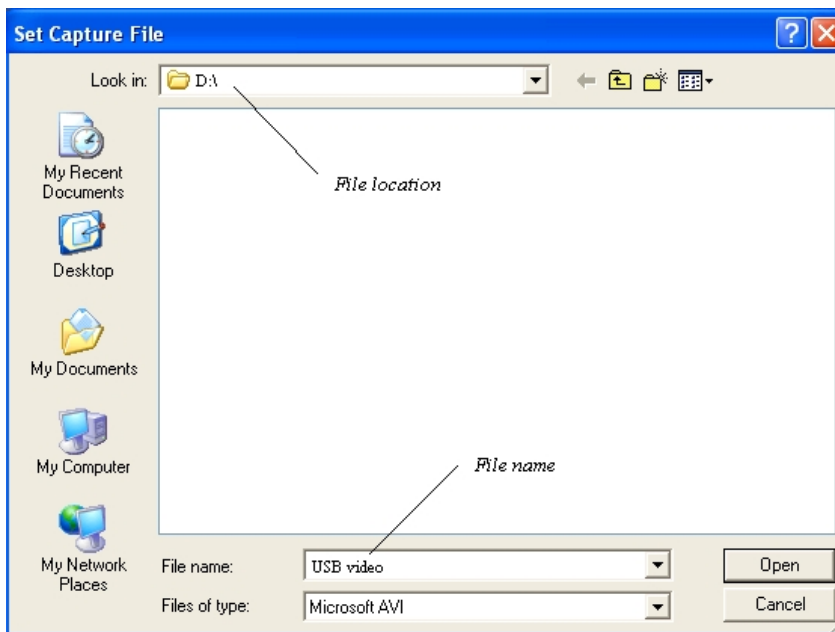
2. Please make sure the software is in properly setting.
Make sure ticking *Devices->USB video device* and *Options->Preview*.



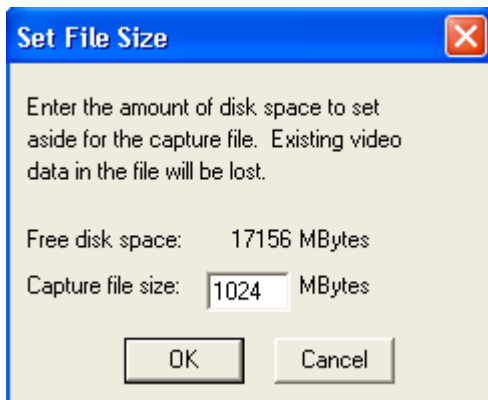
3. Click *File->Set Capture File*, to set the capture file.



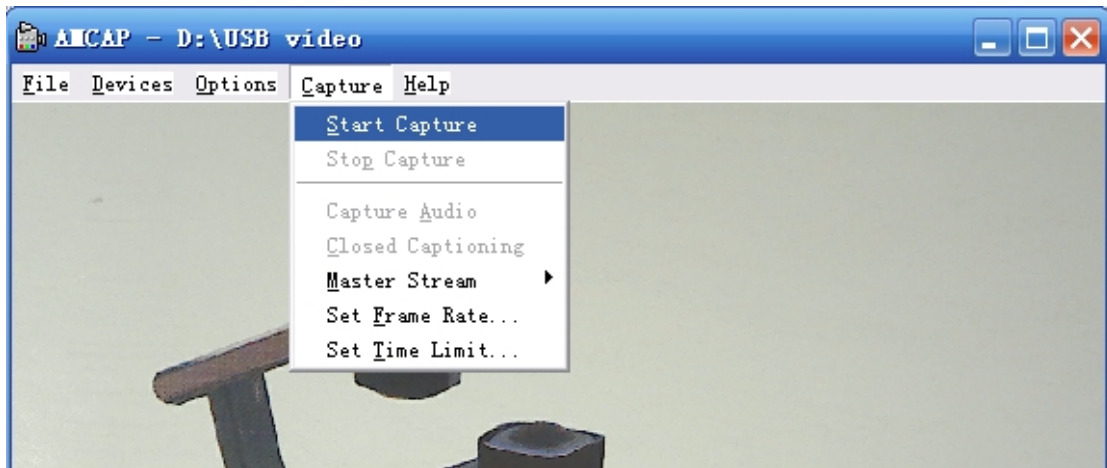
A. Set the saved location and file name.



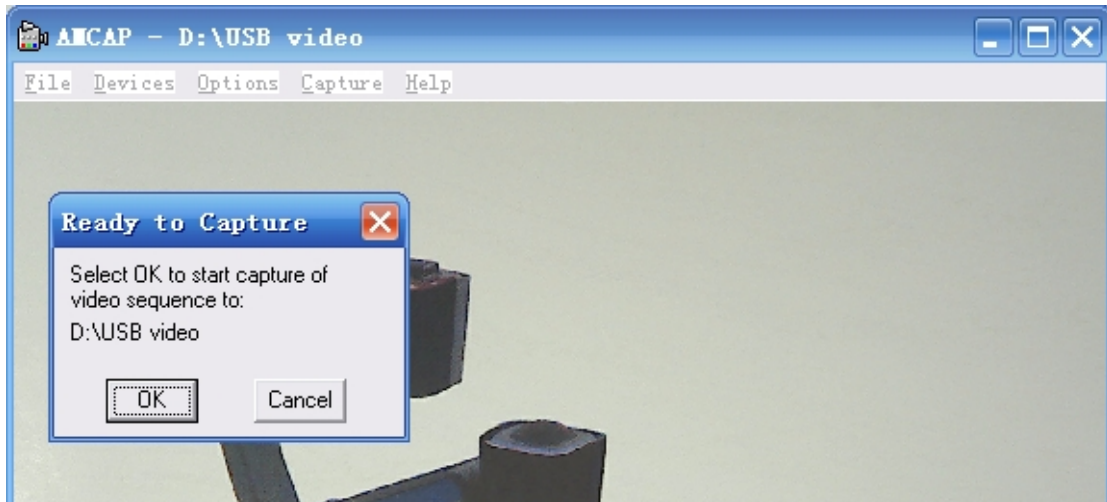
B. Set the file size.



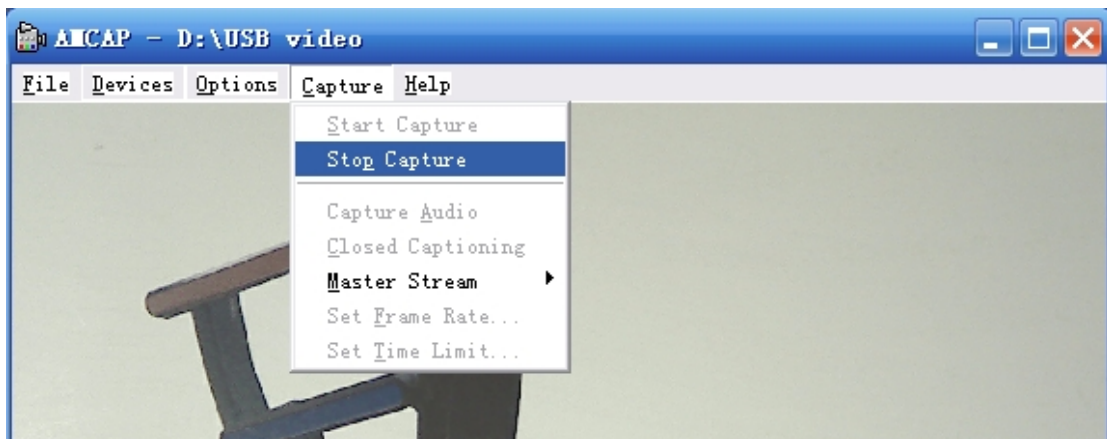
4. Click OK to finish the setup, then click *Capture->Start capture* to capture video.



4. You will see the following window, Click OK to start capture.



6. Click *Capture->Stop Capture* to stop



7. FEATURES

LIGHT

Press “**LAMP**” to turn on or turn off the light.

ZOOM IN AND ZOOM OUT

Press "**ZOOM+**" or "**ZOOM-**"

FOCUS ADJUSTMENT

When the i-3060 is turned on the focus automatically adjusts to the stage, it is not necessary to re-adjust the focus if you are only working with flat materials (text, photos, etc.). Only 3D objects require a focus adjustment. Press the “**AUTO**” button to auto focus. Press the "**FOCUS+**", or "**FOCUS-**" button to focus manually.

BRIGHTNESS ADJUSTMENT

If the image effect is not satisfactory, you can adjust the brightness to get a better image effect. Use the “**BRIGHT+**” or “**BRIGHT-**” button to adjust the brightness.

WHITE BALANCE ADJUSTMENT

Each time the lighting condition changes, the user should adjust the white balance of the CMOS. Press the “**AUTO**” button to adjust the white balance automatically.

IMAGE FREEZE

The freeze function allows you to discretely prepare the next image without interrupting current presentation. Press "**Freeze**" on remote control to freeze and unfreeze the image.

IMAGE ROTATE

Press **“Rotate”** on remote control to rotate the image by 180°.

SPLIT SCREEN

Press **“SPLIT”** to compare two images or compare two different views of one object side by side.

IMAGE SAVE

The i-3060 offers the opportunity of storing 12 images on board. You can recall them by just pressing one of the numerical buttons on the front panel or remote control. Press **"SAVE"** to capture the current displaying image.

IMAGE RECALL

By pressing **“RECALL”**, all saved images are displayed in the thumbnail index mode for easy selection.

USB IMAGE CAPTURE AND VIDEO RECORDING

The USB port can be used to capture still images from the i-3060 into a computer. In this way, the i-3060 can be used as a 3-D scanner for your computer.

8. SPECIFICATION

Model	i-3060
Sensor	1/3" CMOS
Pixels	0.85 Megapixel
Zoom	3x optical, 8x digital
Frame rate	15
Shooting area	Max: 13.5"x10.6", Min: 0.1"x0.1"
Focus	Auto/manual
Output resolution	XGA (1024 x768)
Resolution(Horizontal)	≥650 TV lines
White balance	Auto/manual
Color adjustment	Yes
Brightness adjustment	Yes
Image capture	Yes,12 images
Video recording	Yes(via USB)
Image rotation	180°
Image split	Yes
Image freeze	Yes
OSD	Yes
Text mode	Yes
Output	VGA ×1
USB2.0	Slave×1(USB camera)
RS232	x1(computer controllable)
Remote control	Yes(360°controllable)
Light source	LED light box
Kensington lock	Yes
Operating temperature	32°F ~113°F
Dimensions	Folded:12.6"×6.6"×3.7", Setup:19.7"×6.6"×19.3"
Power supply	12V DC power adapter
Weight(net)	5.5lbs/2.5kg

9. TROUBLE-SHOOTING:

Symptoms	Possible causes/counter-measures
No image	<ol style="list-style-type: none">1. Power cord is not properly connected.2. Cables are not properly connected.3. Power switch is not turned on.4. The built-in fuse is broken: Change fuse.5. Change the output resolution.
Image bending	<ol style="list-style-type: none">1. Camera not in right position, adjust the camera.2. Distortion of LCD display, press the “Auto adjust” of the LCD.
Out of focus or blurring image	<ol style="list-style-type: none">1. The object is too close to the lens.2. Focus is on the top point of zoom, press ZOOM-.3. Auto-focus is not on: press AUTO again.4. Fog on the lens in damp climate. It will disappear gradually when the equipment warms up.

If the problem still remains after checking the above, consult your dealer or authorized service personally.

10. PACKING LIST

Item	Quantity
Power cord	1
Power adaptor(12V/2A)	1
VGA cable	1
USB cable(2.0)	1
Remote control	1
User manual(CD)	1

11. TECHNICAL SUPPORT

Brilliant Technology is committed to providing highest possible stand of customer service. We can be reached:

By Phone

Call us at 1-877-98-Brilliant/1-877-982-7455. Our technical support staff provides technical assistance from 9:00AM through 5:00PM Eastern Standard Time, Monday through Friday. Please gather the following information before calling:

- Product model name(s) and numbers
- Product serial number(s)
- Detailed and specific questions

Online

Technical support is also available online at Brilliant's web site at www.brillianttechnology.com.

You can enter your questions and concerns through our online form. Or you can email us at support@brillianttechnology.com.

Copyrights ©2009, Brilliant Technology, LLC. All Rights Reserved.

Brilliant Technology, LLC

Toll Free: 1-877-98-Brilliant / 1-877-982-7455

E-mail: info@brillianttechnology.com

Web: www.brillianttechnology.com